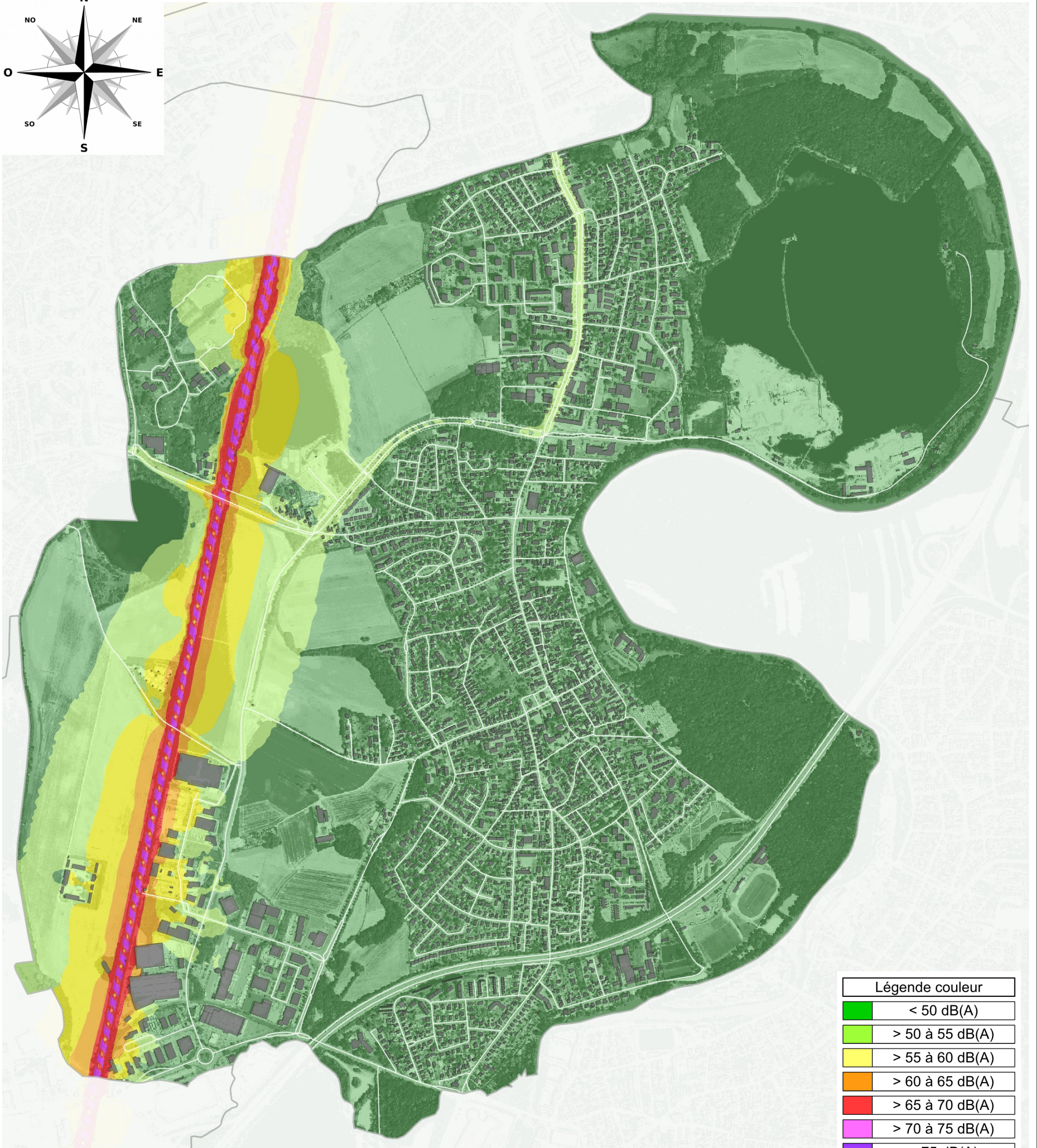
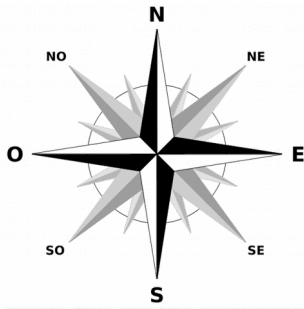


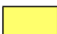






**Bruit ferroviaire**  
**Commune d'Ostwald**

Carte de type A localisant les zones exposées au bruit, à l'aide de courbes isophones en Ln (Level night) par pas de 5, de 50 dB(A) à supérieur à 75 dB(A)



Légende couleur	
	< 50 dB(A)
	> 50 à 55 dB(A)
	> 55 à 60 dB(A)
	> 60 à 65 dB(A)
	> 65 à 70 dB(A)
	> 70 à 75 dB(A)
	> 75 dB(A)